

## Why Does the Body XCell Vibratory Endermatic System Work So Well?

Endermatic technology works by the scientific principle of conduction and resonance. Deep tissue stimulation occurs because the body's cells are more than 90% water. Water conducts and transfers vibratory stimulation. Like the circular waves created when a pebble touches the surface of still water, endermatic vibration penetrates into skin's underlying layers.

### Full Body Exfoliation

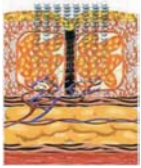
Our bodies naturally shed 500 million dead skin cells each day. These need to be effectively and regularly removed for skin to look its healthy, glowing best. The Body XCell encourages the removal of dead cells. It is the ideal step before any body treatment because excess dead cells can block the penetration of topical nutrients. Exfoliation feels great and rejuvenates skin's appearance.

### Specialized Applicator Heads

- Custom shaped applicators are designed for different parts of the body and provide direct physical stimulation without stretching or pulling the skin.
- Each applicator has a specific function and shape for different effects: petrissage, effleurage, percussion & suction/cupping.
- Applicators are easily removed for sanitation and are made of medical grade PVC.



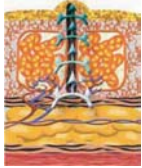
**Multiple Prong Applicator**



Multiple, pointed mini-waves



**Suction Cup Applicator**



Suction, lifting action



**Cloverleaf PRO 4 Massager**



Dual, rounded thumb-sized waves



### Endermatic Technology

Endermatic technology utilizes Directional Mobilization™ to work on the body in simultaneous, perpendicular and parallel motions.



### Advantages of Body XCell's Endermatic Technology

Endermatics lets you personalize every session according to each body's shape and needs. Depending on the desired benefit, you have the advantage of selecting both the vibratory frequency and appropriate custom-designed applicator to achieve a variety of wave form vibration patterns.

Our bodies are more than 90% water. Like the circular waves resonating from a pebble when it enters a pond's surface, deep tissue stimulation resonates for definition of the body.



Before 1st Session



After 7th Session



After 12th Session



Before 1st Session



After 7th Session



After 12th Session

### Benefits for Your Clients

- Non-invasive and painless—no pinching, rolling or damaging of the collagen or tissue
- Improves skin tone, texture and appearance
- Provides body exfoliation
- Relaxing - a unique form of massage

### Specifications:

- 110V, 1.6 Amp, 60 Hz cycle
- Weight: 27.5 lbs (12.5 kg)
- Height: 48"/1200mm, Width: 13.4"/340mm, Depth: 9.8"/250mm
- Color: Off White
- Treatment Cable Length: Over 5 feet
- Organizer Tray (for applicators and supplies) included

Tel: 800.445.8418 • 952.888.8282 • Fax: 952.888.8887  
www.sybaritic.com • info@sybaritic.com

**SYBARITIC**  
Global Aesthetic Solutions

R E D E F I N E T H E B O D Y

I N T R O D U C I N G

**Body XCell™**

**ENDERMATIC™ SYSTEM**



***Endermatic  
Technology  
For Body  
Redefinition***

